

Espagnolette lock

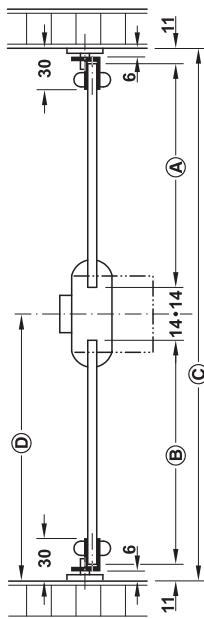
Installation

Please consider that the extending rods must be cut to required size when designing the cabinet and when choosing the accessories for the espagnolette lock:

With given internal cabinet height **(C)** and when mounting the espagnolette lock in the centre, the upper rod dimension is **(A)** and the lower rod dimension is **(B)**. Centre of lock case **(D)** – 25 mm

Due to the three different backsets (15, 25 and 40 mm), identical gap sizes can be produced for corner cabinets and rows of cabinets with the same drilling pattern.

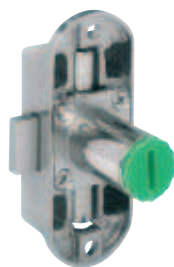
Note: Standard Nova, backset 40 mm is prepared for continuous profile rods.



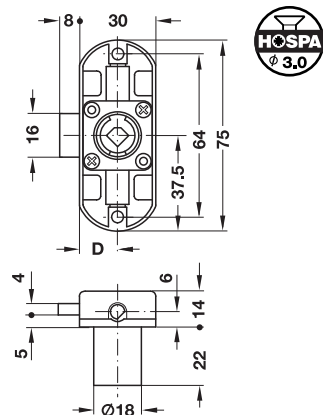
→ Häfele Symo Piccolo-Nova

- > Area of application: For divided profile rod Ø 6 mm, for cylinder cores that are inserted from the front on site
- > Material: Zinc alloy
- > Finish: Nickel plated
- > Backset D: 15 or 25 mm
- > Cylinder housing length: 22 mm
- > Installation: For screw fixing or press fitting

Backset 15 mm



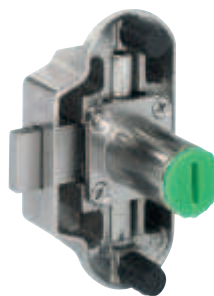
Picture shows version for screw fixing



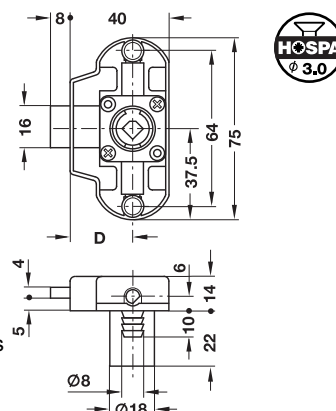
Installation	Mounting	Cat. No.
For screw fixing	Left	224.64.650
	Right	224.64.600
For press fitting	Left	224.63.650
	Right	224.63.600

Packing: 1 or 10 pieces

Backset 25 mm



Picture shows version for press fitting



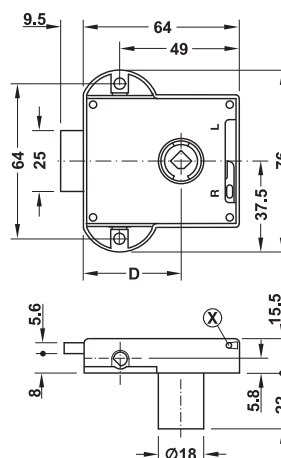
Installation	Mounting	Cat. No.
For screw fixing	Left	224.64.660
	Right	224.64.610
For press fitting	Left	224.63.660
	Right	224.63.610

Packing: 1 or 10 pieces

→ Häfele Symo Standard-Nova

- > Area of application: For continuous profile rod Ø 6 mm or 8 mm, for cylinder cores that are inserted from the front on site
- > Material: Zinc alloy
- > Finish: Nickel plated
- > Backset D: 40 mm
- > Cylinder housing length: 22 mm
- > Installation: For screw fixing

Backset 40 mm



Functionality

The locking direction **(X)** can also be reversed when the lock is already installed, in this case the lock must be locked. When mounting the Standard-Nova espagnolette lock on the left hand side, a special rotary handle must be used, see Cat. No. 229.84.603.

Suitable for	Mounting	Cat. No.
Profile rods Ø 6 mm	Left or right	224.65.610
Profile rods Ø 8 mm	Left or right	224.65.600

Packing: 1 or 10 pieces

Furniture lock accessories	► MB 6.191
Espagnolette lock accessories	► MB 6.192
Symo cylinder cores	► MB 6.81
Symo rotary handles	► MB 6.77